

Sedge emerger

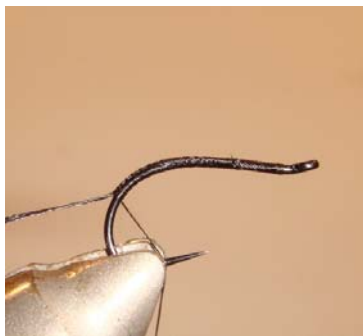
Hook	TMC206BL 14 16
Thread	black 08 or finer
Ribbing	Thread black 06
Body	CDC brown
Thorax	Hare dubbing black
Wing 1	Hen Feather black
Wing 2	CDC brown
Probes	Pheasant tail natural



1. Tie in the thread to 1/3 of the hook shank



2. Fix the ribbing thread



3. Tie in the ribbing into the curvature of the hook



4. Tie in the CDC Feather with its tip.
5. Wind the thread to the eye of the hook



6. Wind a nice body with the CDC feather
7. Fix it at 5 mm from the eye
8. Cut off excess



9. Rib the body



10. Twist the black dubbing onto the thread
11. Wind Thorax



12. Tie in the tip of a black Hen feather in front of the thorax



13. Tie in the 2 probes (pheasant tail) on each side of the wing



14. Tie in the second wing (tip of CDC feather)



15. Wind a nice head
16. Whip finish
17. Use black head cement to finish